

PE0403

Evaluation Kit for CMX724x/734x

The PE0403 Platform Evaluation Kit is designed to assist in the evaluation and application development of the CMX724x and CMX734x ranges of *FirmASIC*® products.

Features

- PE0403 - 724x for CMX724x family FirmASIC® product range evaluation; fitted with CMX7240 to emulate CMX724x device performance
- PE0403 - 734x for CMX734x family FirmASIC® product range evaluation; fitted with CMX7340 to emulate CMX734x device performance
- Instrumentation interface (requires an additional -5 volt supply):
 - 50Ω output signal drivers
 - Instrumentation interface to CMX7240 single-ended input signals (PE0403 - 724x only)
 - Instrumentation interface to CMX7340 differential input signals (PE0403 - 734x only)
- On-board supply regulators operate from a single 5 volt supply
- 19.2MHz oscillator or external clock input to the on-board reference device
- Command and control by PC via the PE0003 Interface Card or via the user's microcontroller emulator or development application
- On-board access to all CMX7240/7340 signals, commands and data
- C-BUS Master for CMX7240/7340 control of other CML evaluation kits

For further information, please refer to the 'Design Resources' section on the CMX724x/734x FirmASIC™ product pages at cmlmicro.com

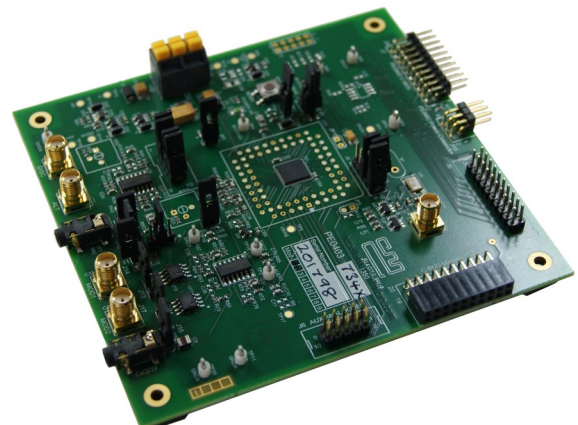
The kit is in the form of a populated PCB comprising a generic CMX7240 or CMX7340 IC and the appropriate supporting components and circuitry. The PE0403 - 724x is fitted with a CMX7240 and the PE0403 - 734x is fitted with a CMX7340.

The board also incorporates all of the necessary power-supply regulation facilities for operation from a single 5 volt supply, or a dual +/-5 volt supply if the instrumentation interface is required.

The board is fitted with a C-BUS connector allowing the PE0403 to be operated by connection to either of the two C-BUS ports on a CML PE0003 Universal Interface Card, and used with the associated PC GUI software, or by direct connection between the CMX7240/CMX7340 C-BUS and the user's µC development application or emulation system.

The common CMX724x/CMX734x Function Image™ (FI) can be loaded, on power-up, directly into the on-board target IC (CMX7240/CMX7340) using the PE0003 interface or the user's system.

Function images suitable for the CMX724x/CMX734x range of products can be downloaded from the CML Technical Portal.



PE0403



WHAT TO DO NEXT

Visit: www.cmlmicro.com

Find: [Distributor](#)

CML Microcircuits Benefits

Faster time to market

Developing proven high performance and field tested ASSP ICs, CML is helping engineers to cope with increasing pressure in delivering shorter project design cycles.

Design flexibility

CML's FirmASIC® reconfigurable technology with the use of a Function Image upload enables a single hardware platform to be used for multiple communications systems.

High Quality

With 100% of products being tested before shipping, customers are assured of the highest reliability.

Product Longevity

Designing with CML products, manufacturers are rewarded with longer product life cycles and a stable BOM, ensuring minimum engineering costs and maximum profit.

Low Power

Being at the forefront of low power chip technology, manufacturers can develop smaller equipment with extended battery life.

Superior Support

Internal and field based applications teams worldwide provide focused customer support to ease the development process.

www.cmlmicro.com

United Kingdom
United States
Singapore

Tel: +44 (0) 1621 875500
Tel: +1 336 744 5050
Tel: +65 62888129

email: sales@cmlmicro.com
email: us.sales@cmlmicro.com
email: sg.sales@cmlmicro.com